

FareCompare Firefox Extension

The FareCompare Firefox extension provides a real-time fare alert. The extension updates automatically as soon as new fares have been published keeping you informed of fare changes in markets of special interest.

With this updated release, the FareCompare extension includes a star rating system indicating whether or not the fare displayed is a cheap fare or an expensive fare.

In addition, with this new release you can track international travel to or from the US and Canada.

Installing the FareCompare Firefox Extension

For the extension to work, you need to have the Firefox browser on your computer. If you have not yet used Firefox go to [download Firefox](#), and then come back to this page using Firefox as your web browser.

The extension can be installed on computers using the Windows, Mac, and Linux operating systems.

- [Click Here](#) to install the FareCompare extension for Firefox. This will begin the download process from the Mozilla site (this is a trusted source for the Firefox browser).
- You can also see the FareCompare extension overview at the official Firefox Add-ons site [here](#).
- If the **Software Installation** window is visible click **Install Now**.
- As a final step, restart Firefox.

Once you have installed FareCompare and have restarted your Firefox browser, you will see the FareCompare icon in the lower-right of the browser status bar.

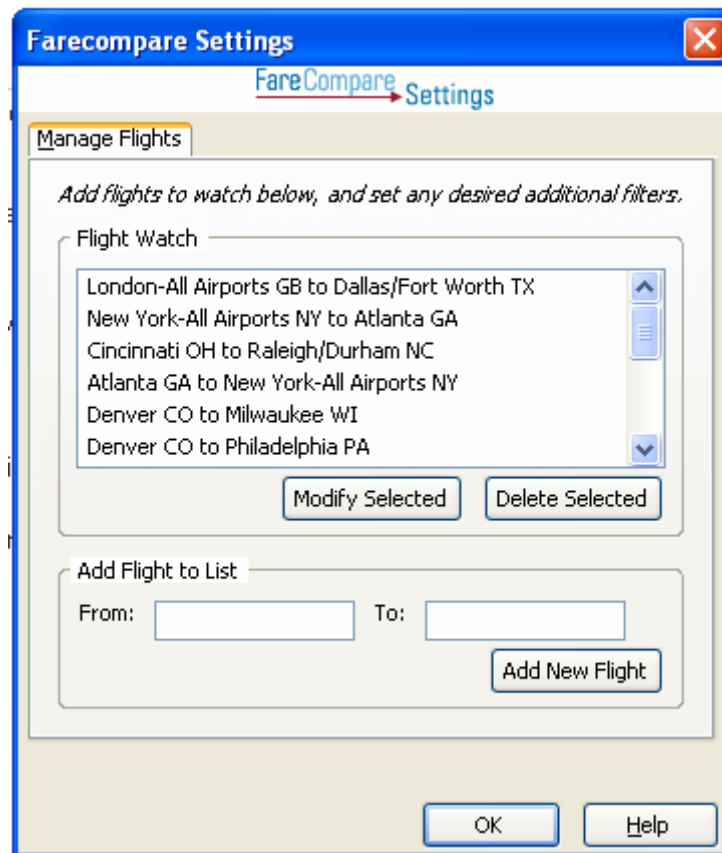


Setting up the FareCompare Extension

To begin tracking fares you need to first access the setup page. You can do this by **Right-Clicking** on the **FC logo** in the lower right-hand border of the Firefox browser. This will open a menu like this:

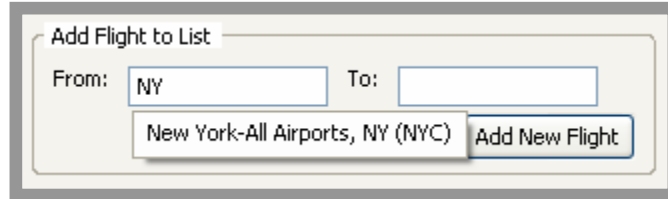


Select the **Settings** menu option and you should see the following window:



To enter your first city pair for tracking, please type in the first few letters of your starting point in the **From:** box under the title **Add Flight to List**. The extension uses an auto-suggest feature based on the characters you enter. The benefit of

this approach is that you only need to enter a few letters to see your city pop up. Once your city appears, you need to select it by clicking on the actual city name.



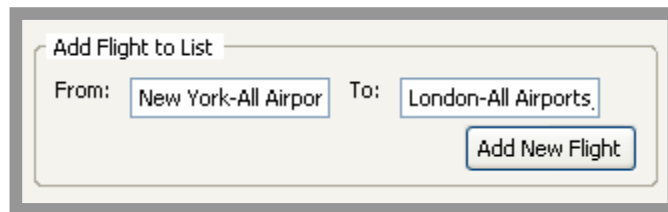
Add Flight to List

From: NY To:

New York-All Airports, NY (NYC) Add New Flight

This completes your selection of the starting city and you repeat the same on the destination city.

When the extension displays the full city names for your origin and destination cities you should click on **Add New Flight**. In the sample below New York and London are the selected cities

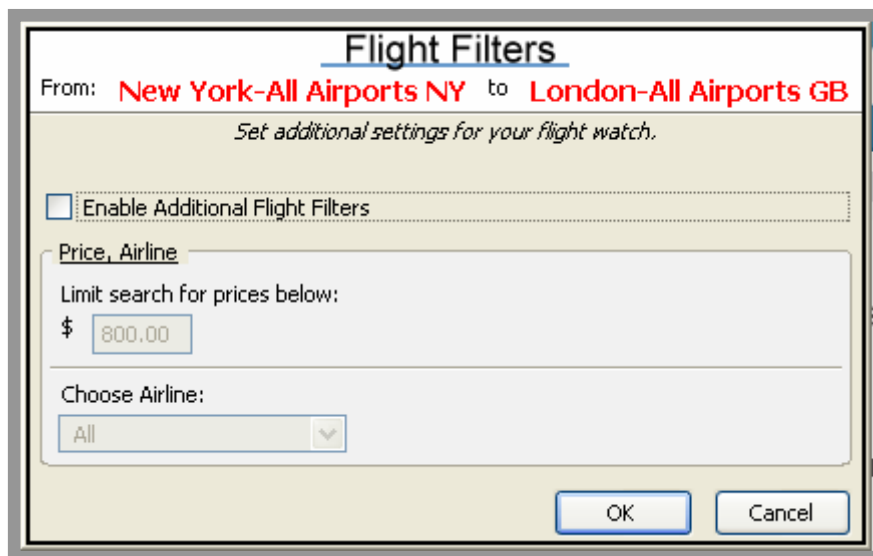


Add Flight to List

From: New York-All Airpor To: London-All Airports

Add New Flight

When you select **Add New Flight** a new window will appear allowing you to set additional filters. If you prefer not to add any filters, you can select **OK**. This will complete the setup for your city pair.



Flight Filters

From: **New York-All Airports NY** to **London-All Airports GB**

Set additional settings for your flight watch.

Enable Additional Flight Filters

Price, Airline

Limit search for prices below:

\$ 800.00

Choose Airline:

All

OK Cancel

The two filter options you can select are:

- 1) Price filter
- 2) Airline filter

To set these filters, first check the box marked **Enable Additional Flight Filters**.

This will enable the price and carrier boxes.

You may now type in any dollar value in the price box. We encourage you to set a realistic price value if you would like to get alerts. If the current lowest price in the market is above the price you have set, no results will be returned by the Firefox extension. You probably will want to tweak this number over time to determine the best level to set for price.

You can also select to track fares from a specific carrier. To select your carrier use the right hand arrow on the **Choose Airline** menu box. Once you find your airline in the list, select it to activate this filter. The FareCompare extension supports the selection of only one carrier per city pair. If you are interested in tracking low fares for more than one carrier per city pair, you can set up a new city pair. For example you might track Atlanta to San Francisco with a price limit of \$350 for Delta and then set up a second tracker for the same market and price but looking for AirTran fares.

In the example below, \$700 has been set as the price limit and results will be filtered to only return fares for New York to London that are \$700 or below on Delta Airlines. The extension does not validate that the selected carrier has fares or service in this market. So be careful when using the carrier filter in markets where you do not know specifically who has scheduled service.

Flight Filters

From: **New York-All Airports NY** to **London-All Airports GB**

Set additional settings for your flight watch.

Enable Additional Flight Filters

Price, Airline

Limit search for prices below:

\$

Choose Airline:

▼

OK Cancel

When you select **OK** you have completed the setup for tracking your city pair including your filter.

Click **OK** on the main setup window to close it.

Bi-Directional Fares

Domestic fares (the United States and Canada) are bi-directional. You can select New York – Los Angeles and the fares returned are valid for travel starting in either New York or in Los Angeles.

International fares are not bi-directional. You would need to set two separate trackers if you are interested in tracking the fare in each direction. For example, you would set up one tracker with New York as the origin and London as the destination. You would then set up an additional tracker for London as the origin and New York as the destination.

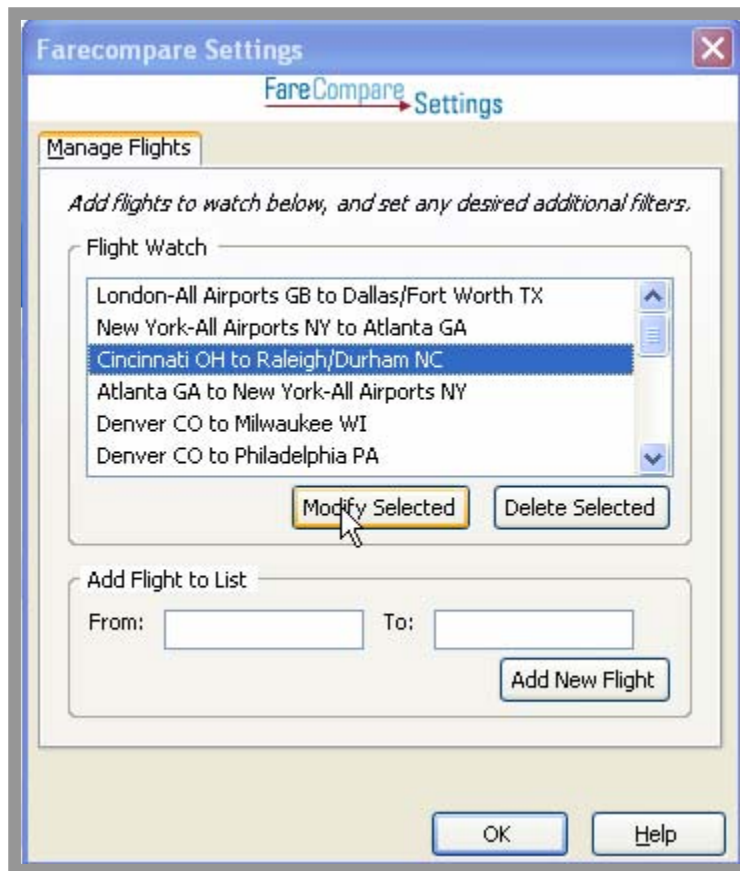
Note that with flights originating in a foreign city, the fare price will be quoted in local currency.

Adding Additional Cities

You can set up as many markets (city pairs) to track as you would like. To set up additional markets, repeat the instructions below. Once the setup is completed the new market will be added to the fare display and the extension will begin tracking for updates.

Modifying Fare Tracking

You can easily add or change filters on your existing city pair searches. **Right click** on the **FC icon** showing the access menu, select **Settings**. In the city pair display, select the city pair combination you would like to modify and they select **Modify Selected**. This will open up the Flight Filter window. At this point you may uncheck the filter to disable this function or you may adjust the price level or change the carrier selection. Select **OK** to return to the main setup up menu.



Manual Update

When you **Right click** on the **FC icon** you will see the option to **Check Now**. When you select this option the extension will poll the FareCompare fare engine to see if there are any new updates. This is a manual check. In most cases you should not need to make a manual check since the extension updates automatically.

Known Bugs

At the present time the FareCompare Firefox extension does not always properly identify the local international currency when displaying fares. Carriers can file fares originating from one country in another currency (for example British Midland can file a fare from Copenhagen to Atlanta in British Pounds while the local currency is Danish Kroner). This bug will be corrected when we validate for the currency the fare is filed in. At present the extension assumes the fare is in the local currency of origin.

Fare Updates

Now the Firefox extension will check to see whether there are fares that match your filter. If you have not set any filters, the extension will return the lowest published fare for the cities selected.

New Fares Indicator (Windows only)

The extension provides a visual and audio signal when new fares are identified. Below you can see the small red highlight at the top of the FC icon. This indicates that the extension has found new fares. The extension will update each time you create or modify a search and also each time FareCompare updates fares.



Update Timing

FareCompare processes fare updates within 10 minutes. Online travel agencies and airline sites take up to 4 hours release new fares into their pricing systems.

With FareCompare's Firefox extension you are the first to know about great new low prices that have yet to be posted. These new low fares typically have very few seats and being first in line for these seats gives you the best chance to lock in a great price.

If you find a new fare in FareCompare's Firefox extension but cannot find the fare for sale either at the carrier's site or with an online travel agency, we recommend you try again. It is possible that the fare has not yet been updated on these sites.

The Firefox extension is designed to automatically check for updates three times per day shortly after each new feed is received by FareCompare. If you are actively tracking a specific market, you may select to manually check for new fares by clicking on the "Check Now" button.

FareCompare receives updates for domestic fares (U.S & Canada) fares three times a day on weekdays (10:00 am, 12:30 pm and 8:00 pm EST) and at 5:00 pm EST on Saturday and Sunday. International fares are updated at 1 am, 5:30 am 11 am, 3 pm and 8 pm on weekdays and at 5 am and 5 pm on Saturday and 5 pm and 8:30 pm on Sunday.

International Fares

With the most recent update, the Firefox extension now supports international travel. You may select any market which includes a city in the US & Canada as either the origin or the destination. Travel to the US and Canada will be listed in the local currency of origin. At this time, FareCompare does not support international travel that does not include the US & Canada. No results will be displayed if you select fare tracking for an international city to another international city, for instance Moscow to London. One of the cities must be either in the United States or Canada. This is not a bug. FareCompare may include this capability in the future.

Star Rating

With this update, FareCompare has integrated the star rating system into the fare display. The star rating at present is displayed only for markets within the US & Canada. Stars will be added for international travel when historical charts are included in the FareCompare web site. Star ratings are described below:



A Four Star rating indicates that the current fare is at or near its all time historical low (FareCompare maintains 24 months of fare history). If you find a four star fare we encourage you to buy now.



A one star rating indicates that the fare is at or near its all time high. Depending upon your travel plans, you may decide to wait before making your air ticket purchase.

FareCompare does not offer a predictive value, i.e., whether the fare is likely to go up or down in the near future.

Taxes and Fees

The domestic fare prices (US & Canada) are for roundtrip travel and do not include all applicable taxes or fees. The prices displayed in the Firefox extension include the 7.5% federal excise tax as well as any fuel surcharges. Not included are the September 11th security fee, the federal segment tax and passenger facility charges. On average these additional fees are \$20 for non-stop flights and \$40 for connecting flights.

The international fare prices (to/from the US & Canada) include all applicable surcharges, but do not include any taxes or fees. International airfare taxes are

complex and vary greatly depending upon your original origin as well as your specific connections. Taxes and fees can easily exceed \$100.

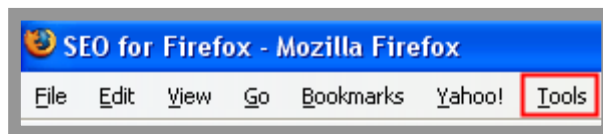
Fare Accuracy Disclaimer

FareCompare attempts to update fares as quickly as possible in order to present you with actual fares that can be purchased. However fares are highly dynamic and it is possible that the sale fares displayed in the Firefox extension may have expired, may have changed, or may not be available at the time you view review the results. The information provided in the Firefox extension may include inaccuracies and typographical errors.

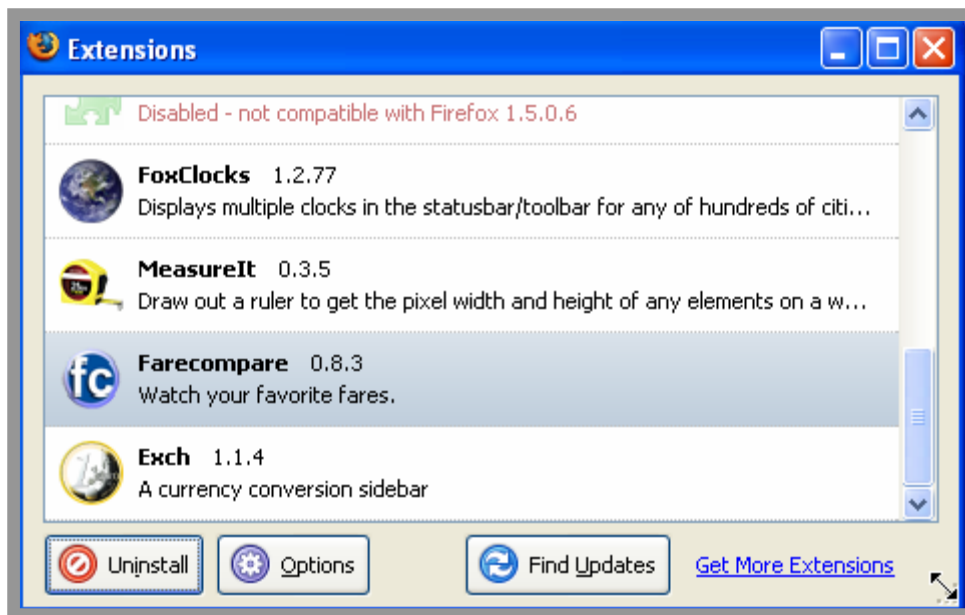
How to Update the FareCompare Extension for Firefox

Periodic updates will be released for this extension when we add new features. There is no need to reinstall this extension to get it to update. To update this extension:

- While in Firefox look at the menu across the top of your browser. Click on the **Tools** link.(or hit Alt T)



- From the **Tools** drop down menu click on **Extensions** menu (or hit Alt E)
- At the bottom of the extension box click the **Find Updates** button. If there is an update available for any of your extensions there will be an **Update Now** button to the right of the extension. Click on the **Update Now** option. The update will be downloaded to your browser and will become effective once you restart Firefox.



Fare Display

When you hover your mouse over the **FC icon**, you are presented with the latest information for the fares you are tracking.



Researching Fares

To learn more about a specific fare, select the city pair with your mouse. You will see that the city pair will be highlighted as per the image below. Select the fare by clicking with your mouse. This will open up a new tab in your Firefox browser displaying the fare information on the FareCompare.com site.



Firefox version 2.0

The extension has been tested successfully in the newest version of the Firefox browser. Note that extensions can now be found under the **Add-Ons** menu option in **Tools**.

How to Uninstall the FareCompare Firefox Extension

- Open a Firefox browser window
- Navigate on the browser menu bar to **Tools** then **Extensions**
- Select **Farecompare** with the mouse
- Select **Uninstall** and then **OK**
- Close all Firefox browser windows
- The FareCompare extension will be gone when the browser is re-opened

Disclaimer

The FareCompare Firefox Extension software is provided "as is," and you use the software at your own risk. We make no warranties as to performance, merchantability, fitness for a particular purpose, or any other warranties whether expressed or implied. No oral or written communication from or information provided by FareCompare LP shall create a warranty. Under no circumstances shall FareCompare LP be liable for direct, indirect, special, incidental, or consequential damages resulting from the use, misuse, or inability to use this software, even if FareCompare LP has been advised of the possibility of such damages. These exclusions and limitations may not apply in all jurisdictions.

Unauthorized distribution or commercial use of the information provided in the Firefox extension is strictly prohibited.

Copyright 2006 FareCompare LP

Updated: September 28, 2006